

**THAT**  
Linking

JULY  
1979

**PAPER**  
Communities

**FREE**  
NEXT MONTH 5p  
**ISSUE**

**INSIDE**  
 > WHO WE ARE  
 > ANDREWS REDUNDANCY  
 > COMMUNITY NEWS  
 > BASFORD FARM  
 > WORKSHOPS  
 > HI KIDS  
 > RADFORD

# HYSON GREEN TAKES OFF

14-15 July \*

Hyson Green is staging another Festival this year during the week-end of the 14th and 15th of July. It will start on Saturday the 14th with a colourful procession of bands and floats from the Market Square to the Forest at 12.00 mid-day and there will be an opening ceremony on the Forest at 1.00pm.

The weekend will be crammed full of events designed to suit everyone's taste. There will be Inflatables, a Hot Air Balloon, Indian Dancers, Morris Men, Puppet shows, a Robin Hood period show, theatre groups, beer and food stalls, as well as many other activities. In the music line there will be Reggae, Rock, Trad Jazz, Folk, Gospel Singers, Classical music, Steel Bands, African Freedom singers and lots more.

**WIN A BIKE!** (LUCKY NUMBER ON BACK OF)

**PROGRAMME**

15p

14-15 July

▼ The Festival weekend has been organised by people living and working in Hyson Green. They emphasise that it is a multiracial event and that they hope to show the outside world that Hyson Green is not such a bad place as the media would have us believe. They hope that the staging of this event will help to draw the community together and give back pride to the people living in the area.

Full details of the weekend's events will be in the official programme. Each of these programmes is numbered so don't throw them away; yours might win the prize. **WHY NOT COME ALONG AND HAVE A GOOD TIME!** \*

## OLD HOMES TO NEW HIDDEN COSTS

Recently, Springfield St., in the New Basford area, has joined the ranks of Nottingham's old houses undergoing modernisation. But there have been hidden costs.

**IMPROVEMENTS**  
The improvements include the installation of central heating, new inside doors and a back door, new bathroom and toilet facilities plus a refurbished kitchen with new windows. Finally, the houses are completely redecorated.

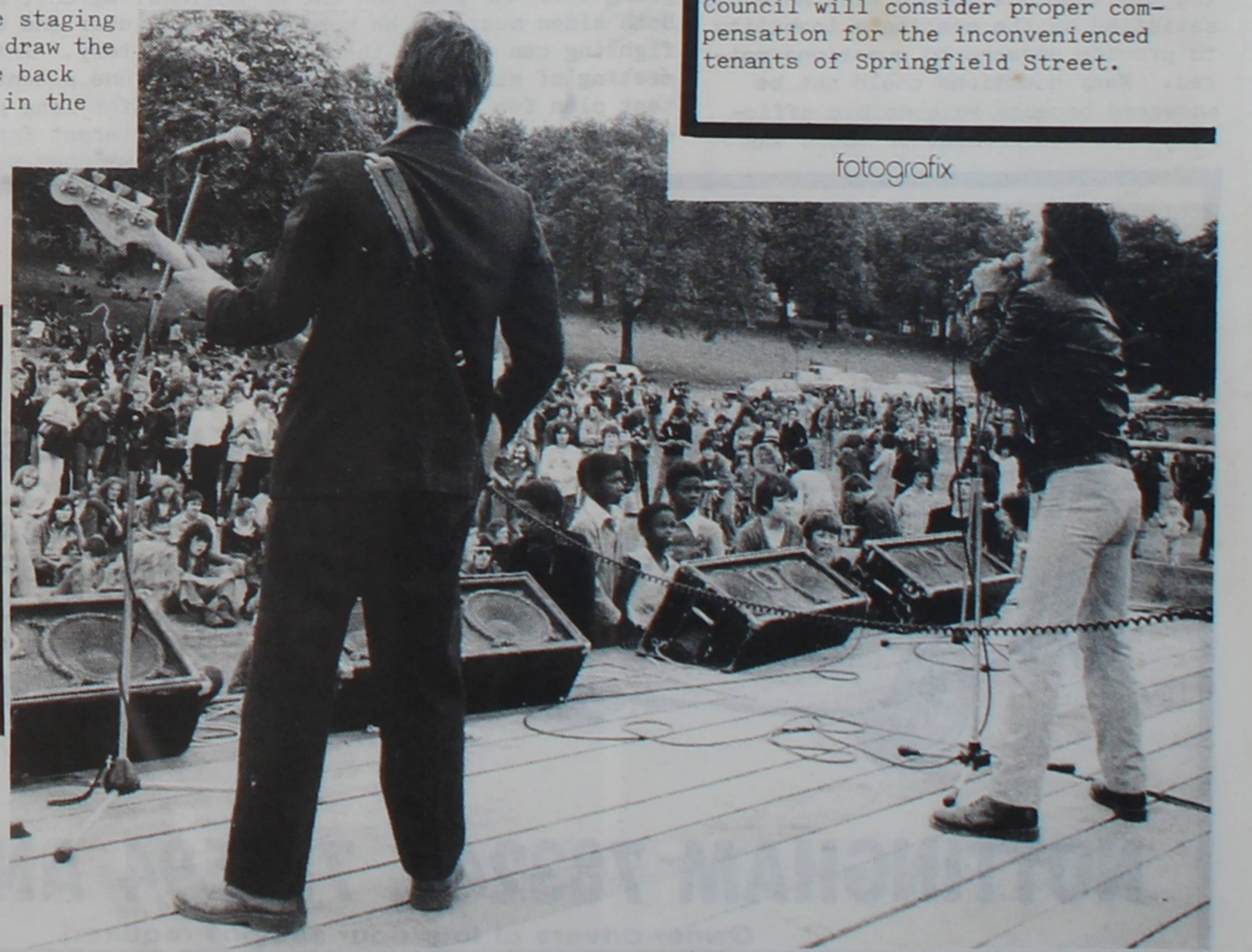
**DIFFICULTIES**  
However, 'That Paper' found that residents of Springfield St. ended up with a list of difficulties. First, although they did have the choice of whether to have the houses modernised or not, they were not offered alternative accommodation while the work was being done. Secondly, the promises of completion within ten weeks have, for some tenants, meant more than twice that.

**MUCK**  
One tenant who has lived in Springfield St. for 40 years found herself sharing a toilet with two other households. Her story ended happily with the provision of a much needed handrail and lowered bath. Other tenants found the problem of keeping children from the danger and muck of the conversion a nearly full time job. Facilities such as water, plumbing and electricity were cut off without warning, and one family suffered irreparable damage to an expensive carpet. Another tenant had problems with security - her back door was a piece of nailed up hardboard for 7 weeks until finally action was taken.

**POLITE**  
The workmen were generally polite and friendly, although the scheme was obviously badly organised, over all.

**ACTION**  
Action is needed to prevent this kind of thing happening again in the City, and perhaps the new City Council will consider proper compensation for the inconvenienced tenants of Springfield Street.

fotografix



# What Paper? THATPAPER

This paper is the first issue of THAT PAPER. THAT PAPER was set up by a group of people who thought that there was not enough co-ordination and information passing between people who live, work, go shopping, attend school or do one of the many things that go on in the Basford, Forest Fields and Radford areas. This is the area covered by the City Council's controversial District Plan. It was widely felt that issues of concern to people in the area were not fully discussed and many tenants groups submitted objections to the plan. We intend to provide information relevant to the future of this area, but will, of course, reach wider when this is necessary. Along with monthly publications of THAT PAPER we hope to provide a news, information and research service; not competing with any other services but co-operating with tenants and community groups and trade unions to be able to provide a useful local resource.

## WHO WE ARE

Ten of us work on this paper; we are funded for a year by the Manpower Services Commis-

ion under a Special Temporary Employment Project (STEP). Every Friday there are collective group meetings, and people in the area are welcome to join in with our discussions.

## WE'RE LEARNING ALL THE TIME

The STEP programme is for training. None of us have had any experience of this kind of work, but this last month we've learned a lot and we're getting better all the time. As far as possible, skills and decisions are shared.

## OPENING UP TO THE COMMUNITY

Please send comments, criticisms and letters about this first issue. We want to give readers a chance to MAKE THEIR VOICE HEARD. Get in touch about writing articles on your group or interest.

Groups can affiliate to the project's Management Group, which advises on policies about any kind of discrimination, the quality of articles and so on.

We are also holding a READER'S MEETING on Wednesday 18th July 8pm in the Probation Office, behind the Cricket Players, Radford Road.

It has come to our attention that there is a possibility of redundancies at Andrews Dye Works, Bulwell, and that manning levels at Nottingham's two Dole Offices are so low that they, too, may soon close. Where, we wonder will the people made redundant at Andrews' go to sign on?

Deadlines for the next issue are: features, 20th July. News, 25th July.

This time we've distributed 5,000 free: the next issue should be on sale from newsagents for a few pence.

Lastly, thanks to the many people who helped us with typesetting, layout, printing, as well as by giving us information.

That Paper Collective.

## District Plan Storm

Irate objectors, including local Tenants Associations leaders, fired questions at City Officials quite recently.

The occasions were the Public Meetings around the City which discussed the Basford, Forest Fields and Radford District Plan. The Plan contains Nottinghamshire's land allocation proposals for planning in the area over many years. Some 68 separate objections were lodged by one group, after the round of 'Public Participation Meetings' which took place before the May elections in the City.

## Public Enquiry

The stated aim of many of the objectors was to force the Basford, Forest Fields and Radford District Plan before any official Public Enquiry. Officials and planners at the meetings were subjected to heckling and accusations of staging meetings which did little or nothing to inform the public about the plan or its implications for tenants and residents in the area. Protests at the short notice of the meetings and lack of supporting information about the plans surprised the organisers of the meetings who explained the procedures they had to use to see that everyone had a chance to understand what was going on. People not satisfied by the explanations seemed even more dissatisfied by the meeting's inability to provide answers to questions raised. Many questions could not be answered because responsible officials were not present or there was

## That Paper Falls from the Sky

On July 22nd, one of our fearless reporters will jump from an aeroplane with only the assistance of a parachute... and the help of the British School of Parachuting. The BSP based at 1 Norfolk Place, Nottingham, arrange training for a considerable stretch of the country. You can look forward to a breathtaking Feature in no. 2 of THAT PAPER.

apparently insufficient knowledge amongst those who were present.

## Keep your Cool

Harrassed organisers and officials tried to keep composure and control as one after another objectors demanded attention to questions which could not be answered (according to Department Heads) "off the cuff".

Both sides accepted that the B.F.F.R. Plan was raising more questions than answers about problems in the Plan area.

The officially lodged objections now require the originators to bring the Plan back before the public. Reaction from Tenants' leaders and other objectors was that Round One had gone to "The people in the street".

City and County department officials now have to deal with the problem of going over the plan and the objections. Both sides must now be hoping that infighting can end and there can be a meeting of minds on what is an important plan for a large and vigorous area of Inner Nottingham.



## Something Stinks

Something stinks between 142 and 146 Forster Street in Radford. Ask Mrs Beryl Donohoe, who lives at 146 and she would tell you that it was number 144 Forster Street.

Number 144 was vacated in September 1977 - put up for sale it attracted no buyers. It did attract a passing vagrant, however who kicked down the door and used the kitchen as a lavatory. Internal vandalism put off one potential buyer and, left empty for long periods the house became a target for casual stones and the windows were broken.

Mr Donohoe's main complaint, however, concerned the state of the back yard at number 144. Falling boundary walls had filled the yard full of rubble. In addition there had been dumping - wooden panels - ashes - carpets etc. A soggy mess sticking to the ground and excrement caused flies. An awful smell pervaded Mrs Donohoe's adjacent back yard and her sighting of rats added to the discomfort caused by the unsightly mess.

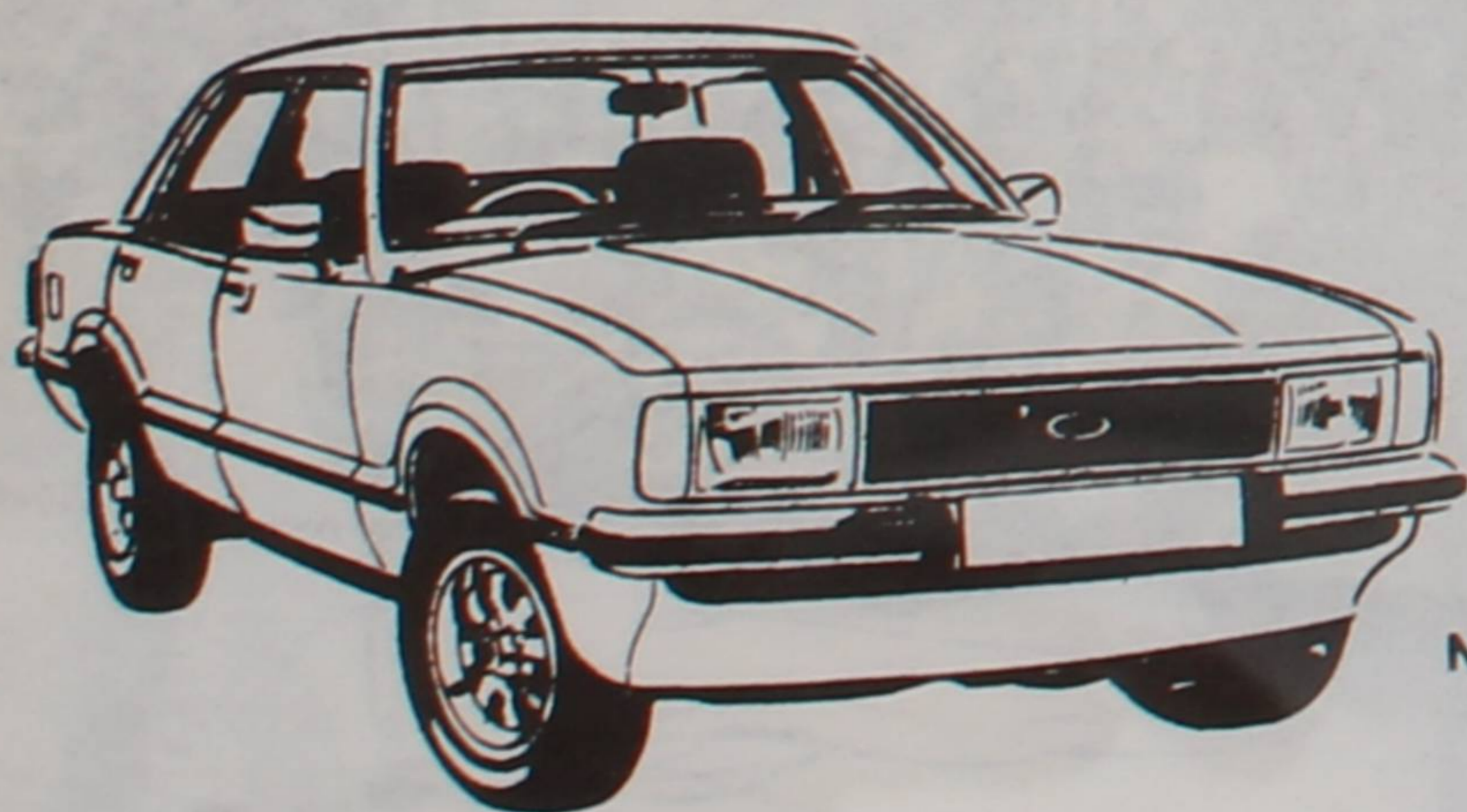
## The Health Man

Mrs Donohoe complained to 'The Health Man' and the yard was partially cleared. The bigger articles of rubbish were removed. Not entirely satisfied she went to REATAR a local Tenants' group, and another token clean-up took place. With the rubble building back up again Mrs Donohoe went to the Housing Department, threatening to seek the help of local newspapers if nothing was done. If that visit and promise of action achieved anything Mrs Donohoe says so far she has seen no evidence of it.

On Friday 8 June 1979, Mrs Donohoe noticed a worker nailing up the front of 144 Forster Street and sought his advice. That advice was to contact the Health Department.

Something continues to stink in Forster Street and it is still right next door to Mrs Beryl Donohoe at number 146.

# D. G. TAXIS



**24 HOUR SERVICE  
RADIO CONTROLLED CABS  
LOCAL & LONG DISTANCE  
WEDDINGS A SPECIALITY  
CONTRACT WORK UNDERTAKEN  
ESTIMATES GIVEN**

**NOTTINGHAM ROAD SERVICE STATION, NOTTINGHAM ROAD  
NEW BASFORD, NOTTINGHAM**

**NOTTINGHAM 783240, 787594 AND 786890**

Owner drivers of four door saloons required

# DOLE OFFICE TO CLOSE?



Either one or both of Nottingham's Dole Offices (Castle Boulevard and Basford) could shut down this summer because of insufficient staff - for the Unemployed this would be a disaster.

The workload for Nottingham's dwindling Unemployment Benefit Office staff has rapidly increased. Several major changes have hit both the claimants and staff in the City. The use of computers reduced staff by 28% while claimants have experienced difficulty arguing with a computer. Fortnightly signing and payment may entail a further 11% cut instaff; for claimants getting insufficient money every two weeks, rather than weekly, is likely to

bring on a severe financial crisis. Fortunately, claimants can choose to sign weekly, which will also save UBO staff jobs. But the big problem is the Government's 3% reduction in staff. 1,500 people are expected to join the City register and approximately 150 staff are needed to cope with the new total. The Government cuts may well mean the number of staff sinks below the hundred mark, and if this happens the Dole Offices will be brought to their knees. Will they close their doors this summer?

Information from: Civil Public Services Association and Claimants Union.

# REDUNDANCY THREAT who's next?

It could be the Dole Office for 43 employees of Andrews Commission Dye Works unless the threat of redundancies that hangs over the firm can be lifted. The Bleachers & Dyers Union whose HQ is in Old Basford are fighting for job retention for the 43 somewhere in the trade. Les Skinner Branch Secretary, told me that the multinationals are helping the workers out - out of the door. The fact that they can do the work at a cheaper price than firms like Andrews (small, family) combined with cheap imports from countries like Hong Kong where the workers are forced to accept very low wages means they are priced out of the market. The effect on workers in textiles is disastrous; it's a vanishing trade. Although some workers will get re-absorbed in the same industry, many are looking for a change; to make a new start, in a different trade with a future. "I'd be very surprised if there's any trade left at all when today's youngsters have grown up" a shop steward at a related firm told

me. At the same time, the sense of value in performing a skill it's taken half a lifetime to learn is given up with some reluctance; many steer clear of different kind of jobs.

#### What Future

Youngsters with a half-finished training and the older worker, without much chance of getting another job, lose out the most. Redundancy payments are desparately low. It takes years of service to build up a couple of thousand quid and these sums are, anyway, exceptional. When there's no job in sight for months and perhaps years the sums do little to cushion the blow for someone with responsibilities.

Is this the end of a very important part of Nottingham's employment history? Hosiery, knitwear, textiles dyeing have been part of its life blood for hundreds of years. When another firm closed down a while ago they operated a Last in - First out principle. The last man did leave - he'd only been there 27 years!

## PLAY IT

## AGAIN SAM!

The new Labour City Council is having another look at Tenant Participation. Letters have been sent from the Housing Committee to all tenants associations, asking how the scheme can be improved. The previous Committee adopted a scheme in 1978 with six local committees and a City-wide committee, both made up of tenants representatives and councillors.

#### Watchdog with no teeth

Although the committees could report directly to the Housing Committee, they were to have no real power: Watchdogs with no teeth.

Many tenants associations had trouble with the previous scheme, not least because it sometimes meant that properly elected tenants associations were no longer encouraged to negotiate directly with the Council. Another criticism was that in those areas without a democratic tenants group, the Tenants Representative was likely to be only speaking for him or herself. Further, finance hadn't been made available to help keep all tenants informed; worst of all, neither the public nor the press were allowed in to meetings.

Many tenants associations think that the best way for the Housing Committee to consult tenants is directly through tenants associations.

## GNASH

GNASH. The Greater Nottingham Action on Safety and Health is a group set up to promote healthy and safe conditions at work, by providing back up services to trade union representatives. They aim to do this by meetings, a Hazard Information Centre providing technical equipment to measure hazards and organising campaigns.

We can look forward to advice on how to fight dangers from chemicals, noise, vibrations, temperature and other potential hazards in local workplaces.

GNASH, 118 Mansfield Road, Nottingham.

fotografix

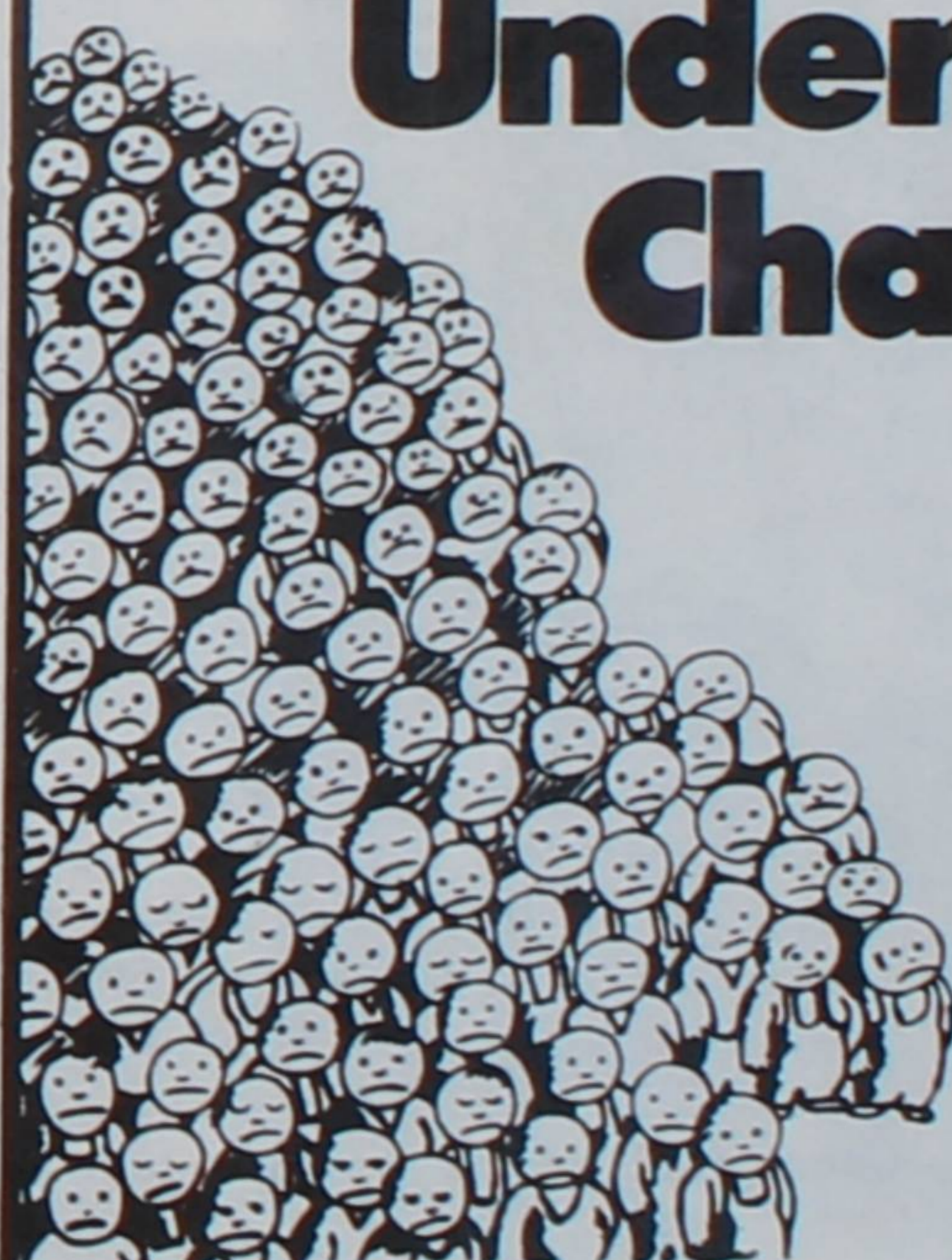
photography and graphics

john birdsall 782463

## Sacked Journalists Need Support

Nottingham Trades Council is co-ordinating another picket of the Evening Post on September 1st, with thePrint and Journalists Unions to continue pressure against the tyrannical management of the Evening Post. 28 journalists were sacked for joining a national strike called recently. Workers in the Evening Post offices are denied the freedom of joining a trade union. The previous picket attracted 1,000 people.

## Fight for NUPE'S Under-Fives Charter



- \* Fight for a national plan for under-fives services.
- \* Fight for a massive expansion of education and day care places.
- \* Fight for an end to low pay in the nursery service.
- \* Fight to restore the cuts in nursery building.
- \* Fight for under-fives facilities to be available on demand, free of charge.
- \* Fight to base the expansion of services on nursery centres.
- \* Fight to abolish the NNEB and create an integrated training scheme for all under-fives workers.
- \* Fight to provide pre-school facilities with flexible hours to meet the needs of working parents.
- \* Fight for local councils to draw up a development plan for all under-fives services.
- \* Fight to change the law on childminding and registration.
- \* Fight for one Government department to have responsibility for under-fives services.

NUPE

National Union of Public Employees

## Anti Nazi League

On Saturday July 21st at 1.00 the ANL Carnival will start with bands MEDIUM MEDIUM, BERLIN AND FAR IMAGE There will be side shows and a beer tent all day and a knock-out football competition from 11.00 in the morning.

ALL PHOTOGRAPHS IN THIS ISSUE BY FOTOGRAFIX & R. SUCKLING.

# Community Cont

## Basford Bits and Pieces

New Basford possesses every kind of housing imaginable - new and old, private and council, rented and owner occupied. "It's very hard to get all the local people together over common issues," explained Sheila Marshall, resident of the area. "We just keep tackling the different problems." For example, a thousand signature petition achieved a playground on Gawthorne Street a while ago. More recently, unsightly garages on Northgate, managed by Crawley and Partners, were to have their Planning Permission renewed 'on the nod' in October 1978. Local opposition resulted in a promise of improvements and the addition of a surrounding fence and gate. Yet, eight months later, residents are still waiting...

Another long wait has been for the proposed improvement of Northgate itself. This thoroughfare, more suited to the Horse and Cart than the Juggernaut, may be widened over the next few years.

Traffic is a major problem in New Basford, with the Industrial Estate almost landlocked in a narrow-roaded patch of residential housing some distance away from the supply roads. The recent changes on Noel St., intended to minimise unnecessary traffic flow, don't help since they force heavy traffic onto ill-suited roads. The widening and improvement of Shipstone St. would provide an escape route for such traffic to the ring road (via Wilkinson St.) but it seems that "the land is too valuable for road building".

## ★★★★ POWA ★★★★★

P.O.W.A. Tenants Association was formed in March '79 after the Wallen St. Housing Action Area was declared. The area can be defined as the dwellings within a triangle, bounded by Radford Boulevard, Alfreton Road and the Players' Cigarette factory. A survey conducted in the area showed that a main priority was to get earmarked houses demolished quickly, and the people affected rehoused. P.O.W.A. Secretary, Simon Ennals, said residents are also worried about day-long car parking by

workers at Players' and other factories. A popular idea, which might be proposed to the City Council, is for parking facilities to be granted to residents only. Alternatively, the cleared area might be converted into garages. But this land is also wanted for a play area, as proposed within the Basford, Forest Fields and Radford District Plan.

Other priorities indicated by the survey include rapid improvement of houses in the H.A.A., and getting the streets cleaned regularly.

## Tennyson Street Adventure Playground



Tennyson Street Adventure Playground is situated on Tennyson Street, just behind the Windley School, on Forest Road East. It is open in the evenings during the week and throughout the day during the weekend.

It's a hive of activity down at the playground. Some kids are building dens, others are building castles in the sand and still others are swinging from the nets. The playground resounds to shovelling, hammering, sawing, shouting, and laughing as kids mix cement, dig holes for door posts, saw up bits of wood to make furniture for their dens, and generally have a good time. Some kids are rolling tractor tyres around, another group of kids with bikes are being teased that the wheels from their bikes are going to be used on the new go-cart that is being made for the younger children.

I'm proudly shown the brightly coloured mural the kids have painted, that has won second prize in a National competition, and told that the prize they received was a number of footballs signed by the Forest team.

Terry, the playleader, tells me that the playground raises it's own money for materials and outings, by staging Carnivals and other events. He says that hardly a day passes when they do not try to get someone to

contribute something to the playground. If my own kids are anything to go by, the playground is worth any contributions it can get. They came with me, thoroughly blacked up and tired out, asking when will we be going again, mum!

Basford Farm began a couple of years ago, but recently gained a new lease of life by the addition of a new fertilizer, eight state-sponsored workers. Nestling beneath Electroplating works, and Bleaching and Dyeing enterprises, the farm intends to house an adventure playground, a vegetable and grazing area (for sheep and goats), a farm yard and an OAP's flower garden in its 1½ acres (that's about the same size as a football field). Since a money raising Fete in June, when an 'Animalobile' hired from Inter-Action in London displayed livestock, the farm has had in its possession 6 egg laying chickens, donated by local people. Donations are badly needed.

At the moment it's buzzing with kids, and hopes to provide educational and recreational facilities for children

## Mums & Toddlers

★ F.F.R.A. ★

Run by Mrs. J. Crofts at the Methodist Chapel, Forster St. A chance for mums to have a natter and for the toddlers to play together.



Parosi

Free classes in spoken and written English are available for immigrant in schools and Adult Education centres in Lenton, Radford, Forest Fields, Hyson Green, Sherwood and Basford starting in September. The classes are small and informal. Contact Jean Coates, Clarendon College, 40004

Forest Fields Residents Association was started 3 years ago. It's present Chairman, Cliff Seeds, explained that there's little to unite the tenants and residents at the moment, except a wish not to see the area go down. For more information, and their newsletter, contact Cliff, at 116 Laurie Avenue, Forest Fields.

## F.A.R.G.

The Forest Anti Racist Group got together some 18 months ago, when a group of people decided that a stand should be made on racism on a local level. We were tired of racist white people complaining about the blacks being here and assuming that every other white person agreed with them. We didn't!

Although the group has involved itself on many national levels, it's main objective is to work locally in the Forest Fields/Hyson Green/Arboretum area, and to give out, clarify and 'put right' false reports given out through the media i.e. T.V., Newspapers etc.

FARG attempts to bring out into the public an awareness of how racism is used by the political parties and employers as a cover up and excuse for the shortage of houses, jobs and the high criminal record, especially around the Hyson Green area.

FARG has been involved in collecting clothes for Zimbabwe refugees, held open meetings on various issues, organised fund raising events. We are affiliated to the Anti Nazi League and support them on demonstrations, especially in demanding the closure of Albion House, Nottingham's National Front H.Q.

At present we are leafleting Hyson Green fortnightly on National/local topics, and hope to continue this.

We meet fortnightly - and if you're interested in joining us, have any contributions to make, or any local issues we should take up, then contact us at: C/o 126 Derby Road, Nottingham, for further information.

## Electroplated Chickens ?

of all ages, along with a focal point for adults in the locality.



# Contacts and News.

ARTICLES AND LETTERS ARE WELCOMED. SEND TO 'THAT PAPER' ST PAULS AVE., CHURCH HOUSE HYSON GREEN

ENVIRONMENTAL INFORMATION CENTRE

The first meeting of the Youth Club was on 11th June, in the Tenants Hall. Amongst the most popular ideas for activities were football, swimming and table tennis. There is hoped to be a football team, a suggested name being 'Basford Colts'. Regular meetings of the club have been arranged for Monday evenings at 7pm in the Tenants Hall, so all youngsters are encouraged to go along and join in. The kids themselves have come up with the ideas, and hope to form their own committee.

## Youth Clubs

Youth Leader: Mrs Steele. Centre situated on the corner of Ilkeston Road and Lenton Boulevard. Opens on Monday and Tuesday from 6.30pm-9.30pm, and on Friday between 7-11pm. Activities include badminton, billiards, darts, table tennis, coffee bar and T.V. room, as well as arts and crafts and 5-a-side football on Monday, drama and dance on Tuesday, and a Disco of Friday. There is no membership. Cost 5p per night.

As yet there is a lack of some equipment, but Lloyd, the organiser, has this in hand and hopes that the club will be in full swing in the very near future.

Full time leader Ray Woodhouse. Building situated on Ilkeston Rd., and is open during the evening. Facilities: a gymnasium, Karate, badminton, basket ball, games room, table tennis, pool, chess, dominoes etc. There are discos on Tuesday and Saturday nights.

Taking place on Meridian Sports Field, Haydn Road from 30th July to 10th August. Helpers and equipment are needed. The project may develop into a long term youth project. Please contact Helen Oreric, on answerphone 609644.

Caroline FitzGerald is employed by the Environmental Information Centre to compile a waste directory for the Nottingham area. The aim of the booklet is to encourage people to dispose of household waste usefully and without harming the environment.

She is hoping to set up a network of collection points where waste can be taken for re-cycling or re-use. The directory will list these points and explain the need for re-cycling, reclamation and conservation.

If you would like to help, please get in touch.

## Indian Centre

The recently opened Indian Community Centre on Rawson Street should be a 'springboard for Nottingham's 6,000 Indian population' explained Dr. Bhatia, Chairman of the Centre. He hoped that the users of the Centre would be able to feel more at home there, fulfilling the aims of the Centre which is open to anyone, as a social, cultural, educational and recreational resource for Indian people.

Already the Centre is being used for Wedding Receptions, a keep fit class for women and various youth activities. In the future they hope to organise cultural events such as Bhagra dancing. This will be aided by four STEP workers.

## ★ ★ ★ PHOENIX ★ ★ ★ ☆ Over 60's ☆

Radford Phoenix Group, 240 Denman St. Tel. 702879., is open to give advice from 5pm - 6pm, Monday to Friday. Secretary; Alan Clarke, 33 Radford Boulevard. Tel. 708461.

place before, and it will be again. You've got to be patient until then."

The group, which was formed this February, has soon made itself aware of the problems of the Radford area, and is busy attempting to solve them.

Phoenix are on good terms with the local authority. They have received prompt response to requests for the clearing of rubbish tips around derelict property. They are presently trying to encourage owners and landlords in the H.A.A. to take up the generous grants, available for reparation and modernisation, from the Council, so that the value of the area will increase. They are also campaigning to obtain reductions in rents for their tenants in view of the undesirable effects of demolition and redevelopment. To do this they must show either a specific disability to the area (the question is whether the effects of demolition are included in this category - Phoenix are looking at other cities for a precedent) or that rates, to which rents are related, have been reduced in the area. Consequently, Phoenix are also looking into the possibility of asking the Rent Officer to fix lower rents because of environmental deterioration.

The few original members of the group learned much from the old Tenants Association, R.E.A.T.A.R., with whom they worked for a few months, before eventually replacing it. Since then they have recruited over 100 new members.

The problems of the area relate to the massive changes that are taking place. Many old houses have been demolished, sites are being redeveloped, and in September 1978, the Radford Boulevard Housing Action Area was declared. The 555 houses involved are within uncomfortable reach of clearance areas. Residents have to put up with eyesores, noise, and air pollution. They look forward to a new community. "It's a waiting game," one resident from Forster St. said. "It was a good

Situated at the Radford Youth Centre at the corner of Ilkeston Road and Lenton Boulevard. Secretary Mr. Charles Reilly. The club has over 100 members who meet every Tuesday. Luncheon Club takes place on Friday, although at present there is a waiting list. Whist drives are held on Monday and Wednesday from 2.15pm, and on Friday evening at 7.30. More players are welcome. Bingo is played on Tuesday at 2pm.

## Radford Care Group



The group, a registered charity, caters for OAP's in the area. They used to meet in the Radford Youth Centre, but now have a new building in Prospect Street. This, consisting of a Day Centre and a Work Centre, was opened in May by Dame Anna Neagle.

The capacity for the Day Centre is 50 people. It is intended for the housebound (transport is provided by Social Services) and the lonely living in the Radford area (this may be interpreted generously). At present it is open from Monday to Thursday at 9.30 am. It will open each day in September. The activities include movement to music, occupational therapy and games. Concerts and fashion shows are arranged occasionally. Members can make appointments for Chiropody and hairdressing, and confidential help and advice is available. But most members stress that the most important gain for them is the company. People are welcome to join, especially men, who are somewhat outnumbered.

At present there is only enough work from industry to accommodate 30 people each morning in the Work Centre, but the capacity allows for a maximum of 50 people. Work is done for Raleigh: sorting components for re-use, cutting string and packing; for Players: packing and dispatching 'Players Post'; for Robert Shaw and Co: examining and packing; for Appledon Industries: packing plastics; and various tasks for the needle trade. The work is done in an atmosphere of companionship: the workers were singing whilst I was there. No profit is made from the firms. Charges are for running costs and a small reward to the workers. People are welcome to join the waiting list.

Volunteers are needed. Contact the Centre Administrator, Mrs. Pauline Davies. Tel. 786133

## Summer Playschemes

### Old Basford

The Tenants Hall has been made available for use for the playscheme, which is to run from the 6th to the 31st of August. Local theatre groups and Edwards Lane Adventure Playground has offered it's support, as have local schools, who have offered to supply some equipment. Other equipment is still needed, e.g. wallpaper, scrap material etc. The playscheme hopes to hire a mini bus to take the kids out, but as yet this is not definite. More volunteers are needed to help run the scheme. Information is available from Sue Walker at Nottingham 701447 during the day.

Centre. The younger children will be based at the Tenants Hall in the flats. There will be two trips, one to Wollaton Park and one to Highfields, both free. We hope to end the Playscheme with a trip to Mablethorpe. Full details from Chris Robinson, 30 Anstey Walk, Hyson Green. Tel. 787813 during the day.

### Radford

A Playscheme is being organised at the Mellers School. More volunteers are needed to make this a success. Contact 240 Denman St., Radford.

To run from 20th - 24th July. Contact Chris Gayle, the Vicar of St. Peter's Church.

### Forster Street

Playscheme runs from 27th - 31st of July. Further details from Alan Clark, Phoenix, 240 Denman Street.

### Hyson Green

The playscheme will run from 20th to 31st August during the hours of 1.30 to 6.30pm, for children from 2½ - 12 years. There will be games and activities on the Forest, and at the Nottingham Community Arts and Crafts



# HYSON GREEN WORKSHOPS GO AHEAD

Plans to convert part of the garage area in the Hyson Green flats complex into workshops have been given the definite 'go-ahead' from the Council's Inner City Committee. This represents a major breakthrough for the Hyson Green Development Tenants Association. HGDTA have been fighting for two years to get the derelict garages under the complex put to good use. The workshops, using 160 of the garages, will be converted into 34 workshop units. They will be situated on the bottom level in line with the adjacent 'Cricket Players' pub, located at the Radford Road end entrance to the garages.

## CO-OPERATIVES

It is planned that these initial units will be divided into three main areas. 1. Small units, at cheap rents for craftspeople. 2. Areas for co-operatives, where local people can organise and run their own programmes. 3. An area for the possible use of the Social Services where handicapped people could be employed.

## DOUBT

There is still some doubt as to whether the Manpower Services Commission is able to fund, under the Special Temporary Employment Programme, an 'Enterprise Workshops Scheme', in which they showed some interest. The 'Enterprise Workshop project is, amongst other M.S.C. schemes in the City, under review, because of the cut proposals in public spending.

## SURVEY

Trent Polytechnic have been actively involved in producing plans for the workshops project and on how best to adapt the garages to suit the needs of the project. The marketing department has examined a survey on the skills of local people looking for employment in the co-operatives, and has made suggestions on the type of products open to a marketing situation. In addition a working party has been set up by the Tenants Association to carry out a more detailed survey of the numbers of people with an interest in being employed within the workshops, and what facilities, creche, school holiday, after school provision, would be required. Such information would be used in any future negotiations with the City Council.

## BRIX BLOX THE PHONE- IN FIX!!

SO WHAT YER DO IS SIT DOWN AND WRITE TO YER MP (EVEN IF YER CANT STAND 'IM) ABOUT WHAT A \*...!x\*x\*... LIBERTY THE GPO HAVE GOT, CHARGING SO MUCH, BUT...

BRING BACK DICK TURPIN

Claret Blanks Flat Plan

NEXT DAY

EHUP! I'VE COME TO PUT YER PHONE IN! TEN QUID.

CASH A BUNNY

More research and discussion will have to take place on the subject of a mutually acceptable management and financing scheme for the workshops.

## COMMITMENT

Against the background of the problems, and the very real difficulties with the garages in Hyson Green, this new commitment is hailed as imaginative and constructive as a way of reducing burdens to all concerned. Further information about the workshops scheme can be obtained from Church House, St. Paul's Avenue, Hyson Green. Tel. 787813.

THAT  
PAPER  
tel 787813

## WANTED ALL OVERSIZE SCRAP METALS

Free Collection Skip Container Service  
Buyers of Iron & Steel: Complete Scrap  
Cars, Steel Turnings & Stampings etc  
Engines, Machinery Plant &  
Boiler Dismantlers  
Buyers of all Classes of Non Ferrous  
Metals, ie Copper, Brass, Lead,  
Insulated Copper, Armoured  
& Lead Covered Cables  
Contract Enquiries Welcome

## Don't cut it.. CRUSH IT!....

LET OUR LINDEMANN 800 TON  
SHEARER SAVE YOU \$\$\$  
WE HAVE THE SKILL AND THE MACHINERY  
TO DEAL WITH ANY OVERSIZE SCRAP  
SAVING YOU TIME IN CUTTING AND  
BREAKING BEFORE SELLING

ITS SHEAR MAGIC  
NOTTINGHAM  
782149 &  
784041

HEAD OFFICE  
GAUNTLEY STREET BASFORD, NOTTINGHAM

YOU LIVE IN HYSON GREEN?  
TOUGH, EH! COS IT'LL COST  
YER OVER FIFTY QUID  
TO GET A PHONE  
INSTALLED -  
EVEN IF YOU'VE  
GORRA LINE IN!

WHY! COS YER  
LIVE IN A HIGH  
RISK AREA.

YOU'D THINK WE  
ALL GOT  
RABIES!

IT'S ONLY  
A DEPOSIT...  
GURGLE GURGLE.

YER DONT  
POST IT.  
(SNIFFER  
SNIFFER)

DEAR BILL,  
MENTHEES -  
US THINK YER  
GREAT, THAT'S  
IF YER GET US A

INSTEAD YOU  
SEND A COPY OF  
IT TO THE GPO  
AND ASK THEM  
TO COMMENT ON  
IT....!!

\*...!!x\*?  
=x0;÷x  
!...#!!

GPO

THAT BAD  
HUH!?

AND LAST YEAR  
THIS ACTUALLY  
HAPPENED TO  
SOMEBODY LVIN'  
IN THE AREA,  
SO YOU TRY IT,  
AND IF IT DONT  
WORK, SEND THE  
LETTER TO YER  
MP (NOT THAT THAT'LL  
ACHIEVE VERY MUCH)

WHATS WRONG  
WITH THE GPO  
HAVING A TOTAL  
MONOPOLY, DAD?

# School Closure & SIDNEY BERRIDGE & PEARSON HILL

Worried parents, whose children attend the Berridge Schools, recently met to discuss news that the County Council propose to close the schools.

## DECIDED

In 1978 it was made known that the County Council intended to replace Berridge, Bentinck and Sidney Pearson Hill with new school buildings. This intention was provided for in the City Council's District Plan. At a recent County Council meeting it was decided to replace only Bentinck and S.P.H. There was no consultation with parents, teachers or the City Council.

## CONCERN

Parents point out that the area around the Berridge schools is well settled, and their has been an influx of young families with re-development. They feel there are enough children in the area to warrant a school of their own. There is also concern about having to travel longer distances, and crossing main roads to get to other schools.

## OBJECTIONS

At a Berridge School Management Committee Meeting, a list of objections to the proposals was compiled. These have been sent to the County Council in a bid to halt the closure. The parents say they are prepared to step up action of there is no response.

In addition, the City Council have been recommended, by officers of the Planning Department, to urge the County Council to replace Berridge and S.P.H., if only two schools are to be replaced. This is after a careful consideration of the adequacy of the respective sites, and suitability of locations.

Another sudden change, made by the County Council, is their decision to close S.P.H. school. This has disturbed both parents and staff.

## REPLACE

The S.P.H. building will be taken out of use in 1980, July. A replacement will ultimately be built on the enlarged site. Originally, S.P.H. was to be transferred in July 1980, lock, stock and barrel into the Radford School building; the Radford School children being transferred to Douglas School. Now some pupils and staff as required from S.P.H. will be incorporated into the Radford School.

## TRAVEL

The change of mind follows consultation with the managers of the schools. The reason appears to be that, originally, children now attending Radford school would have to travel further and cross main roads to get to Douglas School.

Mr Gibbs, the S.P.H. parent-manager, complained that parents were not consulted: "I was not even notified of the managers' meeting, at which I could have challenged their proposals."

## GROUP

A member of the local tenants group says that the important thing now is for the new school to be built fairly soon.

Parents and staff of S.P.H. feel that the bigger school should not be destroyed as a unit. A lot of pupils are happily settled with long serving staff. A petition, with over 600 signatures, opposes the managers' proposals.

..for sheer  
POWER..

NSM Ltd  
SCRAP IRON  
& STEEL  
PROCESSORS



# THE ADVENTURES OF JIM TURTON

FICTION BY BOB ASTON

At last the weak fingers of the November morning sun crept over the top of the blanket and fell full into Jim Turton's closed eyes, bringing the reality of another cold and miserable day that much closer. His dirt ingrained hand formed into a fist, which he used like a waking baby, to knuckle away the sleep.

Turning his head to look at the old clock, he pressed down the plunger in anticipation of its usual 7.40 shrill. Then, groaning inwardly, he tiredly swung his legs over the side of the bed and tottered across the cold lino floor, wheezing as he went, to the pre-war gas stove, which served as the only form of heating in the garrett. Having half filled the kettle and re-drained the tea leaves used on 2 previous occasions, he moved to the sink and gazed bleakly at his ravaged unshaven face. Too many late nights and too much red wine had quickly taken away any semblance of the youth that his 38 years might have shown.

Two cups of weak, stewed tea, a rough shave, a lick and dab wash, and 35 minutes later he took one last dejected look around his home and left to start his daily trip around the dumping sites the City Council grandly called development areas. Keeping a wary eye over his shoulder for the local member of the fuzz, Sgt. 'Stricko' Strickson, he entered the back yard of the first of the latest houses to be vacated through slum clearance. Quickly he reached in his sack and pulled out a sharp knife, and with 2 practiced slashes, cut through the lead piping in the outside loo, causing the water, which of course had not been turned off, to cascade all over the place. Moving as agilely as his wine sodden body would allow, he opened the next loo in line. Just as he was about to go through the same operation again, his eyes caught a glistening shape behind the bowl. Curiously he pulled at the bottom of what appeared to be some form of case, until he finally wrenched loose a brief-

case. Feverishly, his hands clawed at the zip, but then he realised that it was locked, so he quickly placed it in his bag and, forgetting the rest of the as yet ungathered fruits in the form of a long line of lead piping, he hurried on his way back to his attic.

watched

Unbeknown to him, his whole operation had been closely watched by Roger (the Runt) Smith, who quickly made off towards the flats, where he knew he would find Dave (the Mouse) Phipps at the flat of his latest girlfriend, Belle Meridian.

To be continued by our readers! The next chapter in the adventures of Jim Turton is up to you, to make of it what you like. Send in what you think happens, remembering to leave your chapter open, so it can be continued by other readers. The address to send your ideas to is That Paper, Church House, St. Paul's Avenue, Hyson Green.

## FAIR SAFETY

After a report to a recent Sub-committee meeting of Nottingham City Public Services, it appears that welcome measures are being taken to employ a firm of machine safety experts to examine all the rides on Goose Fir. This follows a serious accident which occurred at last year's Goose Fair. Luckily, it happened at a time of day when few people were around, and so an even more serious accident was averted.

In other parts of the country, over the last 12 months, there have been several serious incidents, including 2 fatalities.

The Committee are to appoint Mr. R. A. Moore, of Banwell Moore & Co. Ltd. based in Leicester. Mr. Moore, originally from Nottingham, has dealt with safety precautions at the Loughborough Fair for several years

## RADFORD HOPES

There is a small ray of hope for many of the residents living in the New Radford flats. A Radford Community Project, still in its infancy, whose aims are to develop and aid local groups, is now turning its attention to the flats which, spreading from Hartley Road to Canning Circus, number over 1,000. A fact finding survey has been carried out and will be considered with a view to helping in discovering areas of need.

problems

Listening to the residents, problems would seem to be on two levels. There are the usual maintenance problems of the flats; condensation for example. But there is also a degree of conflict between the different age groups in the flats. The elderly are harassed by young skateboarders zipping dangerously along the ramps and by not-so-young vandals damaging fire doors and lifts; they dread the coming of the school holidays. Parents argue that 'Kids have got to play somewhere'. Some might say the residents should be more tolerant. But most Councils today regret the follies of the 60's when high rise flats like New Radford were built. These style of flats lack proper soundproofing, and cram people too close together.

meetings

These problems, and especially those of the first type, could be better dealt with by a Tenants Association. This could also provide a meeting place for Mums and Toddlers, and for the elderly, to play Bingo for example. Until two years ago there was such an Association, and place. Then, the Management Committee closed the meeting place, a shop, and now rent a hut on Denman Street, which is used for a Social Club. Ray Coward, the Chairman, of 33 Clifford Court, will personally deal with tenants issues. The Management Committee would, however, welcome volunteers to set up a new Tenants Association and allow them the use of the club in the afternoon. Many residents remember the 'the good old days when we had the shop'.

results

The situation may be clearer when the results of the survey have been considered, and the response to the idea of a new situation is known.

## ADULT EDUCATION

A new service to help unemployed adults with reading and writing will run from 1st July to 31st March next year. Mary Bodlovic, the project organiser, and the four tutors will also establish more provision for teaching literacy to the unemployed. For more information, get in touch with Mary at Developmental Literacy Project, 83 Derby Road, Nottingham, 'phone 48545.

try." On a recent Television programme the cameras focused mainly on the flats, suggesting that the 10,000 arrests made by the division last year were confined solely to that area. If that's the case, with only 600 maisonettes in the complex, there would have to have been 15 tenants in each flat committing crimes last year.

We challenge the media to tell the whole truth. It would be a welcome change. Especially for the people of Hyson Green.

Community Policemen are now being trained at Hyson Green. One of them P.C. Lambert, is shown below with County Councillor Dave Watson.



## WELFARE RIGHTS

This is the first in a series THATPAPER intends to run on different aspects of WELFARE RIGHTS. This time it's:-

The most important thing to remember is the difference between what is laid down by law and the day-to-day decisions of the (SBC) Supplementary Benefits Commission. The SBC can use its DISCRETION, so claims can be improved by argument or an appeal to the Tribunal. This is most obviously the case with EXCEPTIONAL NEEDS PAYMENTS. These can be for a variety of needs such as clothing, bedding, furniture but often it will take an argument to exercise their discretion in your favour.

A group advising claimants is getting off the ground in Hyson Green and can be contacted c/o CO(Report) THATPAPER, Church House, St Paul's Ave., Hyson Green. Or phone DHSS David Lane 789231 Shakespeare St 46101 Castle Gate 40421

Here are the current rates:

Couple	£25.25
Single Householder	£15.55
Person over 18	£12.45
16 - 17	£9.55
13 - 15	£7.95
11 - 12	£6.55
5 - 10	£5.30
under 5	£4.40

## VACANCY

Nottingham Community Arts Centre, on Gregory Boulevard, have a vacancy for a person doing small craft activity. Phone Lee, 782463.

## TELL THE TRUTH

Did you know that the Hyson Green Police Sub-division covers Mapperley Park, Woodthorpe, Carrington, Sherwood, Aspley, Bilborough, Broxtowe, Bobbers Mill, Hyson Green and parts of Radford, which is roughly one third of the City.

No? Nor do a lot of other people. Because of their unfortunate name, people think crime handled by the division is committed by tenants in the actual area called Hyson Green, whose population is centred in a flats complex. Geographically, this is only a small part of the area covered by the Police.

The media encourage such thinking. Hyson Green is reported to have "The highest crime rate in the coun-



# QUICK CROSSWORD

## Across

- 1) Surroundings (11)
- 8) Expert at cards? (3)
- 9) Its activity is believed to affect the weather (7)
- 10) Press halfheartedly (3)
- 11) Positive statement (9)
- 15) Strike (3)
- 16) Animal Coat (3)
- 17) Washed (4,5)
- 18) Anger (4)
- 20) Militant Party (1,1,1)
- 21) Garments (7)
- 24) Apathy? Lazy -- (5)
- 25) At a disadvantage (11)

## Down

- 1) Compass point (4)
- 2) Disappear once more (6,5)
- 3) Bureaucracy in 1) down (1,1,1)
- 4) Gorged (7)
- 5) What is left (3)
- 6) Fore and aft (4,2,1,4)
- 7) See 13 down
- 12) Team on edge? (4)
- 13) with 7) Swift's other famous book (4,2,1,3)
- 14) Holy woman (3)
- 17) Spoil (3)
- 18) Wealthy (4)
- 19) Second-hand (4)
- 21) Informative place (1,1,1)
- 22) Knock gently (3)
- 23) Before (poetic) (3)

# CRYPTIC CROSSWORD

Many people find this mystifying or unintelligible. It really is not so difficult. Solving it involves being familiar with a few ideas. In this series, I shall help you to understand such ideas.

Consider the clue 'Quietly, often in a cunning way'. The answer is 'Softly'. We have 'oft' for often and 'sly' for cunning. The letters of 'oft' are 'in' the letters of 'sly' in the word 's( ft)ly', which means 'quietly'.

Consider: 'Prepared land for Edward feeling unwell inside? The answer is 'tilled'. We have 'ill' for feeling unwell and 'Ted' for Edward. In the word 'tilled', which corresponds to 'prepared land', we have 'ill' inside 'Ted'.

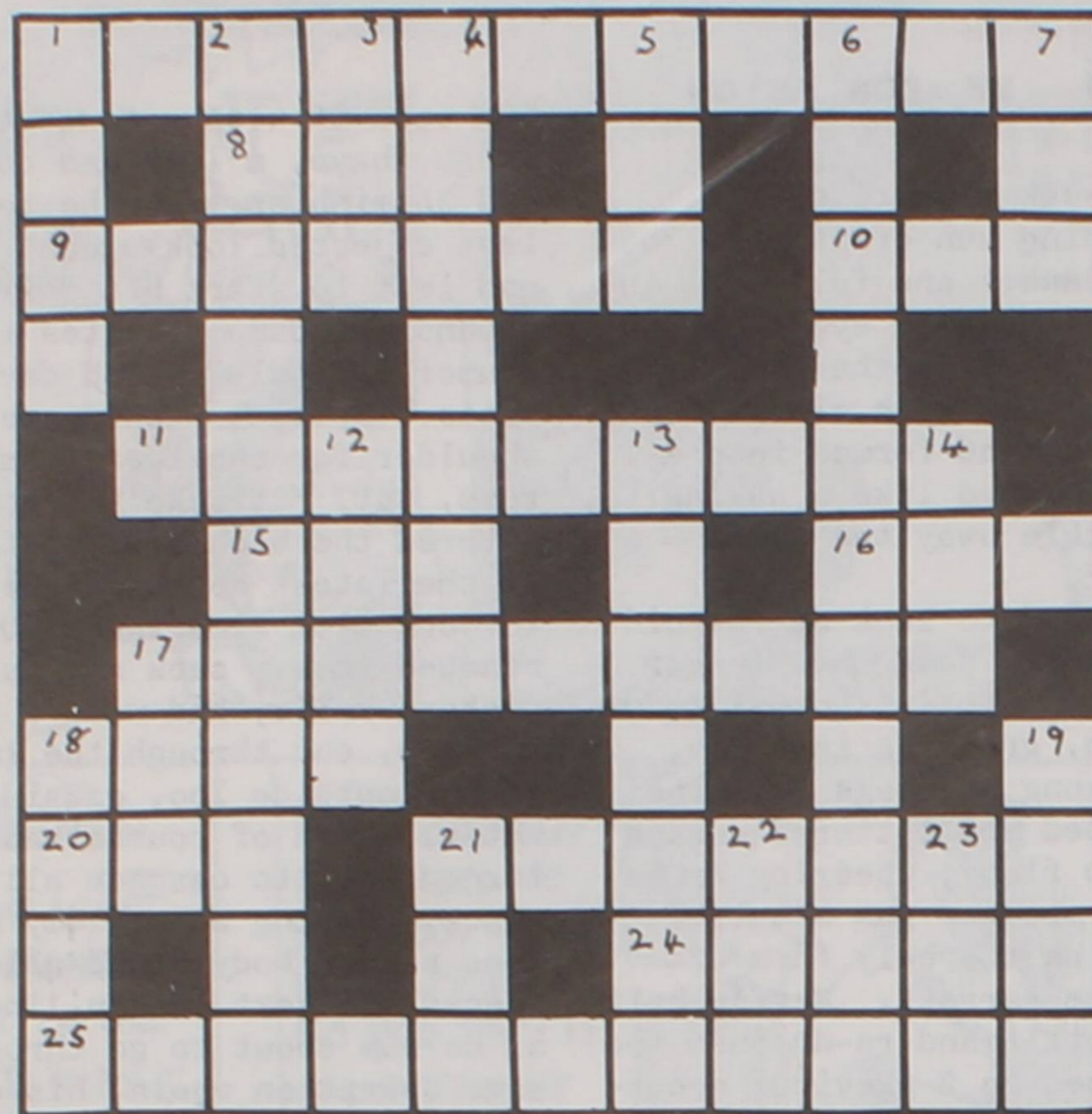
In general, note that we divide the clue into distinct parts, and for each part we find a word to which it corresponds. The letters of these words are used to construct the full answer to the whole clue; this answer will also correspond to either the first or last part of the clue. The construction may be facilitated by words in the clue, such as 'in' or 'inside'. These indicate how the full answer is constructed. In this context, also look out for 'out', 'outside', 'around', 'about', 'before', 'following'.

There will be many possible ways of dividing a clue into parts, and only one way will yield an answer. You just have to keep considering the various possibilities until you get an answer that accounts for almost every word in the clue. In this context, see the hint to question 3) below.

Try the following:

- 1) Chap gets older, but copes.
- 2) Speed by horse to make interment in a city with famous cathedral
- 3) Composed for an appointment after a Senior Executive post, initially.

(Hint: what word do you think is doing the work that 'in' and 'inside' did in the examples above? Once you decide upon this, the way to divide the clue should be straightforward).



WE`VE  
TRIED YOU  
YOU TRY US  
SEND YOUR  
CROSSWORDS  
TO THAT  
PAPER

CHURCH HOUSE  
ST. PAULS AVE.  
HYSON GREEN  
TEL 787813

THAT  
PAPER  
REPORTERS

1. BASFORD
2. FOREST FIELDS
3. RADFORD
4. HYSON GREEN AREA

AREAS COVERD BY CAROL, KEITH,  
DAVE, LIN, TEL 787813

A  
MESSAGE  
TO  
SMALL AND  
LARGE  
FIRMS

\* \*  
THIS SPACE  
COULD BE  
YOURS

OUR RATES ARE

LESS

THAN REASONABLE

TRY US



# HI KIDS!

WINNERS OF POSTER COMPETITION FOR  
HYSON GREEN FESTIVAL.

Stanley School - 1st. Antony Perry  
2nd. Sandra Buxton  
3rd. Samantha Rasbeary

Claremont Comp - 1st. Vincent Naan  
2nd. Sean Flynn  
3rd. Clive Chuian

Bentinck School 1st. Tony  
2nd. Michael Westwick  
3rd. Vicki Hague.

Berridge Rd. - 1st. David Peacock  
2nd. Michelle Smith  
3rd. Jason Green-smith.

Overall Winner - Sandra Burton.

## PAINTING COMPETITION

1ST A BOX OF PAINTS

2 RUNNERS UP

Paint us a picture of your favourite animal or pet, and send it, with the entry form,

\*Closing Date 20th July, 1979\*

Send all entries to Sue and Chris at Church House, St. Paul's Avenue, Hyson Green, Nottingham.

This space is for you. We need your ideas to fill it. Send us letters, pictures, stories, puzzles, games, riddles, poems and anything else you can think of.

P.S. Don't forget your name, address and age on anything you send to us.

See you next month,

*Sue & Chris*



## SPOT THE DIFFERENCE

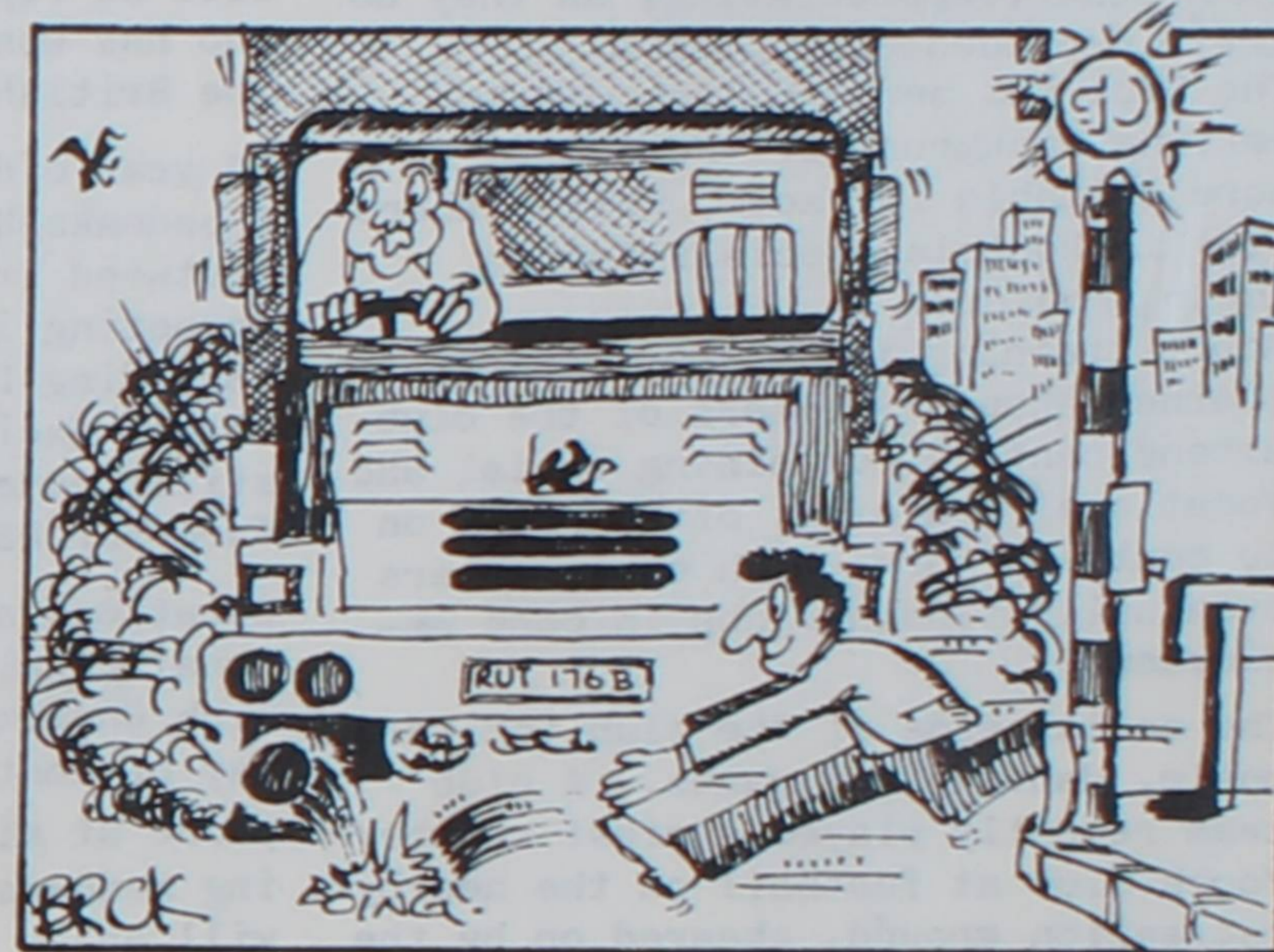
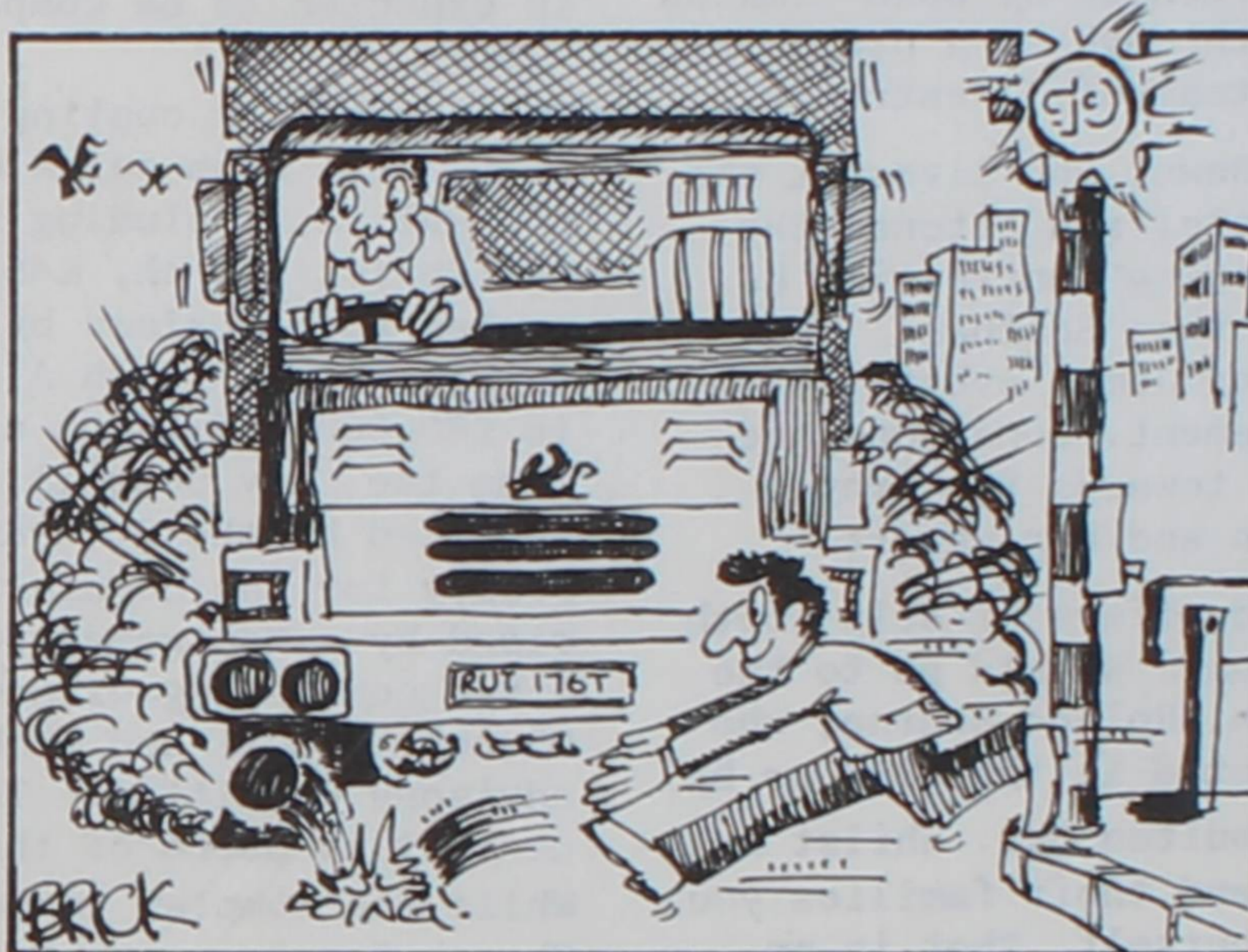
**E NTRY F ORM** ★

NAME \_\_\_\_\_

ADDRESS \_\_\_\_\_

AGE \_\_\_\_\_

\* PARENTS SIGNATURE \_\_\_\_\_



## LOCAL BOY MAKES GOOD

Dave Needham, the present British Featherweight Boxing Champion, was brought up in Radford. As a youngster, he lived 'comfortably' he says in a house in Guthrie Street, a house which has recently been demolished. His father was a motor bike mechanic/foreman and now owns the shop on Radford Boulevard where Dave helps out, repairing and selling motor bikes.

### Early Fights

Being a featherweight, Dave is very small, and this led to other, bigger children at his primary school, Forster St. - now Sidney Pearson Hill - trying to impose their wills upon him. But Dave was never one to be bullied; consequently, what can be described as the start of his career consisted of playground scuffles.

I asked Dave what part he thought Radford had played in his development. "It was a tough environment", he said. "You had to stand up for yourself. But ultimately it depends on the individual". He thinks he would have been the boxer he is where ever he was raised.

Dave's life started to change significantly when he joined the Nottm. School of Boxing at the age of 11. At the same time he stopped fighting outside the ring, and he became more interested academically, working his way from the bottom stream to the top stream of his secondary school, Cottesmore, which he left with 5 CSE's including 2 at 'O' level standard. His teacher of physical education, Doug Scott, the mountaineer gave him a lot of encouragement at sport. Dave was particularly interested in swimming, in which he re-

resented Nottingham, and rugby. He says that Doug, now a friend, was always trying to persuade him to climb; but Dave was not having any of this. "I don't see the sense in it, it's far too dangerous".

### Discipline

Dave says there was more discipline when he was at school than now: "You see far more under age kids smoking and drinking today." He is glad that Cottesmore was a boys' school: "There would be too much mucking about in a mixed school." He stresses the importance of self-discipline in boxing. He trains for two hours every day, and much longer during the period leading up to a fight, when he goes to London, where there are better facilities and better sparring partners.

### School of Boxing

Dave says his old club, the Nottingham School of Boxing, is an excellent one. It is still open today on a Tuesday and Thursday evening, and on Sunday mornings. It is still managed by Arthur Mason and Harold Bamford. At the club, Dave's career did not get off to a good start. He lost his first fight. However, he was encouraged to concentrate on technique and skill; and Dave now wins most of his fights through superiority in these departments. From the club, he went on to win a Gold Medal for Britain in the Commonwealth Games in Edinburgh, in 1970.

Professionally, Dave justifiably considers himself somewhat unfortunate in the international field. He fought for the European title, against the French holder, in France. It is a common joke in boxing that, on the Continent, you have to knock your opponent out to obtain a draw.

Well, Dave drew, to the astonishment of many critics, who thought he should have won. In the return fight the critics again had Dave in front, when, during the 14th round - the penultimate round - despite his protests, the fight was stopped owing to Dave's cut eye. Indeed, most of the few fights that Dave has lost have been due to a cut eye. However he still hopes to win the European title. First he will have to defend his British title against Pat Cowdell at Wolverhampton this coming September. Dave has been married for four years and now lives in Wollaton. How different is that to living in Radford? "I wouldn't go back," Dave says, "but I don't know so many local people as I did in Radford; there everybody knew practically everybody else on the street."



## \* ARTS FOR THE PEOPLE \*

If you have ever had an urge to try your hand at something artistic, or are already adept in a particular field, you might be interested in what is happening at the Nottingham Community Arts and Crafts Centre, on Gregory Boulevard.

The purpose of the Centre is to help develop people's creative talents and to enable them to be practiced. The Centre will soon be offering classes, at LOW COST, in a variety of fields. There will be classes in Photography, Drawing and Painting, Pottery, Silversmithing and other subjects.

As well as providing classes, it is proposed that the Centre be involved in other activities. These include the painting of murals, exhibitions of work done by local people, a Saturday Club for children and the organisation of craft fairs and theatricals. The Centre is also opening a craft shop on Heathcote Street where people will be able to display and sell their work.

At present the building, once a dispensary, is undergoing considerable alterations. An extension has had to be built, and a heating system installed. However, work is progressing rapidly, and the Centre will be open on the 16th July.

PHOTOGRAPHY SERVICE FOR TENANTS AND RESIDENTS GROUPS IN HYSON GREEN.

Calling all tenants and residents in and around Hyson Green - a photography service has been set up for you. If you need photos for your newsletter or your exhibition, to present to the Council or whatever, just call by or give us a ring. Our only charge is for materials used. We're at the Nottingham Community Arts and Crafts Centre, Gregory Boulevard. Telephone number is 782463. Ask for Roger Suckling or John Birdsall.

# MENTAL HANDICAP

The Robin Hood Gateway Club, run by 'The League of Friends' for mentally handicapped adults, meet every Tuesday and Thursday evening from 7.00 to 9.00 at the corner of Ilkeston Rd and Lenton Boulevard.

Typically (but unnecessarily, I was assured by helpers) apprehensive and armed with preconceptions about mental handicap I went along to the club.

My first lesson was in how to treat the members. There is no need to treat them substantially differently to other human beings. 'Mental handicap' simply refers to incomplete development. Members have varying degrees of understanding, but even the more retarded can be communicated with quite easily.

I discovered members of this club were spontaneous, free of malice, co-operative both with helpers and each other, appreciating, as they do their dependence on others.

The Club has members from widely varying backgrounds. Home life is more suitable for some, while others stay in Hostels specialising in their problems.

Adult training is another feature I learned about. Members of the club attend centres, obtaining social and vocational training, often going on to contract work, with some members eventually finding jobs in open employment.

The social side of the club includes music, dancing and games. A club team recently played against another Youth Club at football on the nearby recreation ground, cheered on by the Gateway.

The Gateway is run by an independent group of 15 people, otherwise unconnected with mentally handicapped people. This independence allows for decisions to be made, informally by the helpers themselves. Unfortunately, it also tends to result in a lack of funds and volunteers, which restricts activities outside the Club. Despite this, outings, discos and gifts to the handicapped are arranged.

Along with over 400 other 'Gateway Clubs' throughout the country, the Radford club is affiliated to a National Federation. The Federation was set up by the National Society of Mentally Handicapped Children. The NSMHC, a parent group, provides funds together with a back-up service including emergency care, research, literature, training facilities and courses for parents and professionals.

## Olympics

In New York, this coming August, an exciting 'first time' Special Olympics for the mentally handicapped will take place. The Radford Club will be represented by Dawn Simkins who has won through to a place in the British team of 32 entrants.

23 year old Dawn, who lives at the Broadoaks Hostel and attends the Bestwood Training Centre will be competing in the 'Softball' and 'Standing Long Jump' events, much to her excitement. Donations are still needed towards the travel fare for Dawn and her escort.

Donations and offers of help (both equally welcome) should go to the club Chairman, Roland Bourne, who may be contacted at the club or by phone at Kinoulton 349. Whilst helping members and their families you will enjoy yourself. That is an order, says Mr Bourne.

# All in One

All Souls Church, which has stood on the corner of Ilkeston Rd. and Lenton Boulevard for 85 years, was pulled down in January 1979. In its place, work has already started on a new tripartite building: The All Souls Church and Community Centre.

The complex will comprise a Church, a community Centre, and residential accommodation. Use of the Community Centre is intended for pre-school playgroups, scouts, guides and groups of senior citizens. Badminton courts are also a feature of this section of the complex. The residential element will contain 15 flatlets and maisonettes. This will be for senior citizens. It will be built by the Nene Housing Association

The Church and Community facilities should be ready by this coming December, whilst the residential block is expected to be complete in March 1980.

The complex is costing in excess of £125,000. From sales of Radford properties, including St. Michael's and Christ Church, £45,000 is expected to be raised by the Church Authorities. Urban Aid, amounting to £80,000, of which a quarter comes from the City Council, is being supplied by the Government.

Policy for the complex will be decided by a Management Group/Committee consisting of members of the Church Council and members of an advisory committee. The latter will consist of users of the complex.

While the complex is being built, Church Services are being held at the Vicarage.

# DOES FOREST FIELDS NEED A FAMILY CENTRE?

This was the question St. Paul's church put to a meeting of residents back in Autumn 1976. They came up with the answer that it did.

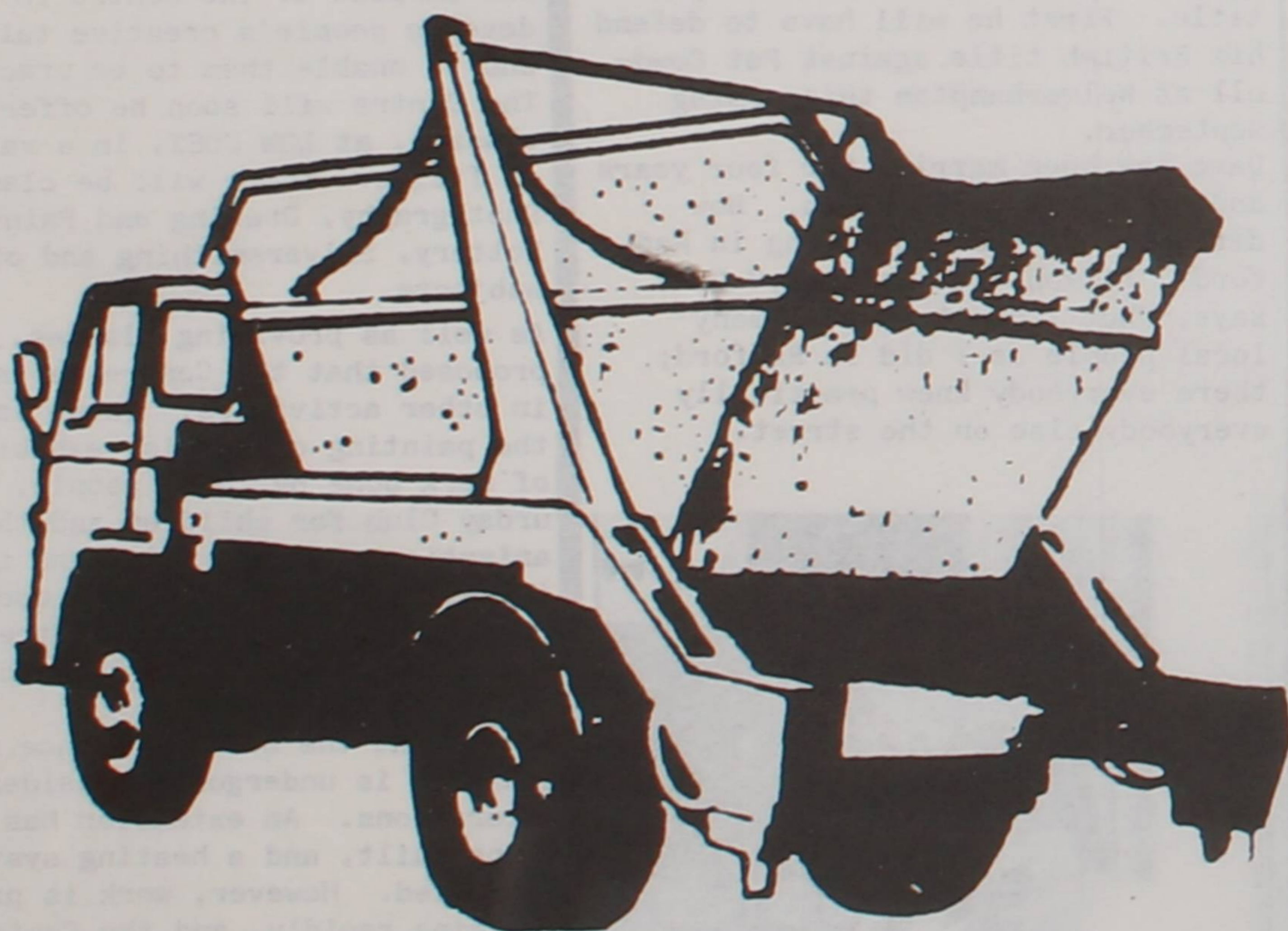
Earlier that year a contract for school dinners came to an end, and the church was facing the fact that St. Simon's Hall, Russell Road, was going to be underused. An architect and a local contractor were consulted. Plans were drawn up to redevelop the existing shell of the building, so that a comfortable lounge area would co-exist beside the open area for indoor games. Toilets, access, kitchen and storage facilities would be greatly improved. The outdoor hard court would also be made available for supervised use by local organisations.

Money was required. The Residents' Association helped up by obtaining 1,000 signatures to support our application for an Inner-Urban Aid Grant, and two ward Councillors, Oscar Watkinson and Rex Rollings, also supported us. We were awarded £10,000, about half the total cost.

Now the work is progressing. We shall open this autumn. The Mothers and Children's club, the Guides, the Brownies and the Cubs will continue. But the Family Centre will be useable by more than one organisation at the same time, and we look forward to greatly extended use by the community and ourselves.

Charles Hall, Vicar of St Paul's, Hyson Green

# CHURCHILL SKIP HIRE LTD.



RUBBISH FROM  
FACTORIES AND  
HOUSEHOLDS,  
INCINERATORABLE  
WASTE.

IF YOU WANT TO TALK RUBBISH

RING 701192